

## In this issue

In this issue:

2017 NZCFI Board Election Results

Credit Professional of the Year Awards

Peter Win Memorial Educational Scholarship

Conference '17

Introducing Lynda Smart – Southern Director

Insolvency Graphs

## NEED TO CONTACT US?

For administration, training, membership and general inquiries:

NZCFI

Executive Director

Owen Goodwin

Phone 09 480 1734

owen@nzcfi.org

For media inquiries, governance issues:

NZCFI

President

Michael Wright

Phone 09 952 2198 x 22198

Michael.wright@oceaniahealthcare.co.nz

Or visit

[www.nzcfi.org](http://www.nzcfi.org)

## Planning for Conference '17



It's June already and the first edition of The Pulse for the year. It's going to be a big second half of the year with the country's General Election in September followed hard on the heels by the Institute's National Conference in October in Auckland. With both events so close to each other we have the potential of engaging members of parliament as government speakers without knowing whether they will be part of a ruling coalition or belong to the opposition by the time they speak at Conference!

The Institute has outsourced a Wellington company, New Zealand Conference Connexions to organise this year's event at Auckland's Pullman Hotel, this marks a new chapter in the Institute's history as the organisation of past conferences has always been kept in-house. The Board has every confidence that NZCC will deliver members a very rewarding event.

I am also delighted to announce that this year we are reinstating our Credit Professional Awards. Winners of the Awards will be announced at our Conference Dinner.

I would like to personally thank Wendy Sommerville, who has recently stepped down from the NZCFI Board, for her dedicated service over the past few years and in the same breath welcome aboard Lynda Smart who replaces Wendy as a Southern Director.

It is always timely in a National Conference year to remind members to make the most of your networking opportunities. There are some top-flight professionals scheduled to speak at local branch functions over the next few months, make sure you make the most of those opportunities and don't forget to plan your participation in our industry's biennial conference.

Regards

Michael Wright

National President

NZCFI

## 2017 NZCFI BOARD ELECTION RESULTS

Nominations for Regional Directors concluded recently and resulted in the election of Lynda Smart as a new Southern Region Director. Lynda replaces Wendy Sommerville who did not seek re-election.

There were no other changes to the status quo. The full membership of the Board is as follows:

**Michael Wright** - National President and Director - Northern Region

**Karen Kaa-Evans** – National Vice-President and Director - Central Region

**Rose Easter** – Director - Northern Region

**Louise Craig** – Director - Central Region

**Lynda Smart and Sue Fletcher** Directors - Southern Region.

The National Board will be meeting in Auckland in June when members will vote for the President.

## BRANCH COMMITTEES

Nominations for branch committees for the next couple of years have been concluded and details will be posted on the website shortly.

# CREDIT PROFESSIONAL OF THE YEAR AWARDS

Last held in 2011, past winners have enjoyed a high public profile and drawn national attention to their place of employment. All finalists enjoy the kudos that comes from being shortlisted for our industry's prestigious awards.

The award recognizes the achievements of leading credit professionals in the New Zealand market, displaying technical, leadership, management and communications skills.

## **The coveted Credit & Young Credit Professional of the Year Awards are returning.**

Last held in 2011, past winners have enjoyed a high public profile and drawn national attention to their place of employment. All finalists enjoy the kudos that comes from being shortlisted for our industry's prestigious awards.

The award recognizes the achievements of leading credit professionals in the New Zealand market, displaying technical, leadership, management and communications skills.

## **Call for Applications**

Credit Professionals are being urged to seize this opportunity to acknowledge and nominate someone, or themselves, who has made an outstanding contribution to their organisation, the wider public sector or their community and whose exceptional performance deserves national recognition.

Contestants will be judged by a panel of industry experts on their knowledge, capabilities and effectiveness at managing accounts and minimising risk. In the past, these coveted awards have seen many credit professionals go on to obtain even greater success and advancement in their careers.

The awards criteria recognises two credit professionals at different stages of their careers.

**The Credit Professional of the Year Award** is open to all permanent residents of New Zealand, who are \*members of the NZCFI, who are working in a credit role.

**The Young Credit Professional of the Year Award** is open to all permanent residents of New Zealand, who are \*members of the NZCFI, who are working in a credit role.

\*If the proposed nominee is not currently a member of NZCFI, **details for membership can be obtained from the NZCFI website [www.nzcfi.org](http://www.nzcfi.org)**

Winners will be announced at the NZCFI Credit Professional of the Year Awards Dinner to be held at National Conference on Thursday October 12 2017.

Further details regarding the process and prizes for this prestigious award will be published on the NZCFI website [www.nzcfi.org](http://www.nzcfi.org)

**Applications close on 21 July 2017.**

**Hurry now and discuss with your nominee and encourage them to submit their application.**

**Application forms will be available on the NZCFI website. For further details please contact Louise Craig on 04-470 3756 or by email [lcraig@deloitte.co.nz](mailto:lcraig@deloitte.co.nz).**

# PETER WIN MEMORIAL EDUCATIONAL SCHOLARSHIP

The Peter Win Memorial Educational Scholarship winner for 2016 will be announced at the National Conference dinner on Thursday October 12.

## **NZCFI CONFERENCE '17** **THURSDAY 12 – FRIDAY 13 OCTOBER 2017 - THE PULLMAN HOTEL, AUCKLAND**

**The Institute's premier biennial event is just four months away and the countdown is on!**

Conference '17 will bring you alongside industry peers and leaders, and give you access to some of the country's foremost experts in credit management, as you are informed on current trends, legal case law and developments, and best practice.

Hear from industry and Government leaders as they present on matters impacting the day-to-day running of your company's risk management and collection strategies.

**The Credit & Young Credit Professional of The Year Awards Dinner - Thursday 12 October 2017**

The Awards Dinner will be a highlight of Conference as we celebrate our finalists. Traditionally the Conference Dinner

has always been an opportunity to provide hospitality for clients in a relaxed setting so why not book a table.

Tickets to this event will be available through the website [www.nzcfi.org](http://www.nzcfi.org)

### **Accommodation**

Accommodation may be booked at The Pullman on a strictly first in, first served basis, so start planning your travel now.

### **Online Registration**

Online Registration for the conference will open in the next few weeks and attendees are encouraged to register early.

[www.nzcfi.org](http://www.nzcfi.org)

For additional information contact: contact Rose Easter  
[rose@changingjobs.co.nz](mailto:rose@changingjobs.co.nz)

## INTRODUCING LYNDA SMART : SOUTHERN DIRECTOR



Lynda Smart is a director of the accountancy firm, Rodgers Reidy. She has held this position in their Christchurch office since 2014. Lynda has approximately 20 years experience in insolvency, forensic accounting and investigation work gained in both New Zealand and the United Kingdom.

Lynda has worked on a number of high profile forensic accounting investigations including several related to failed finance companies following the Global Financial Crisis. The forensic accounting she undertakes is varied including litigation support, fraud investigations and relationship property matters.

She has accepted insolvency and forensic accounting appointments from banks, the Court and several Government departments. In addition, Lynda has also worked with many directors and shareholders of distressed companies and those wishing to investigate and quantify employee fraud.

Lynda has been a member of the Institute for six years and recognises its intrinsic values.

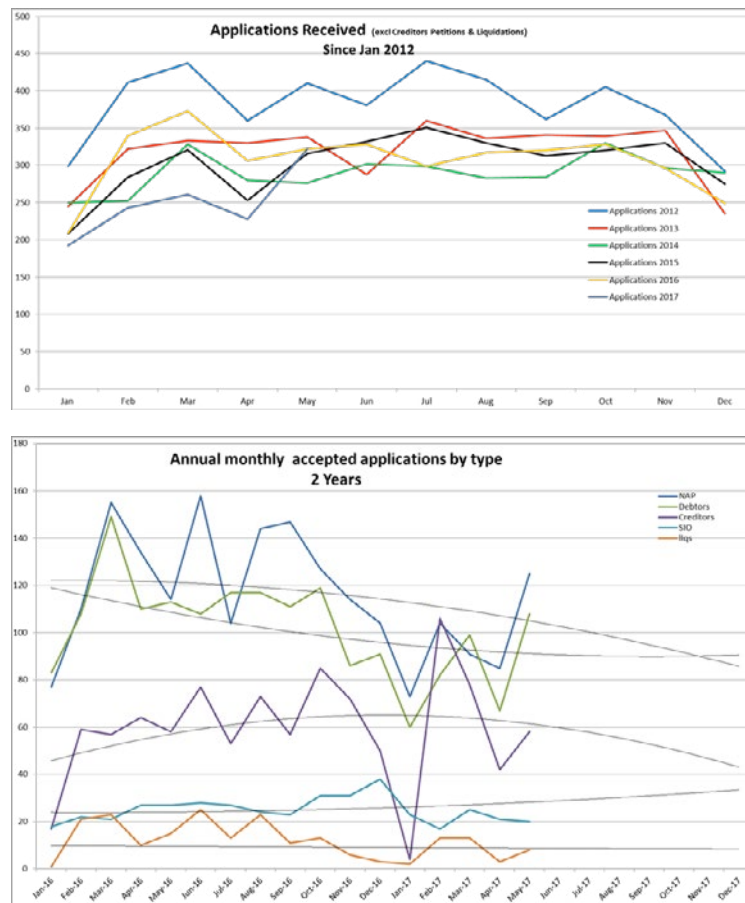
“NZCFI provides a fantastic forum for credit professionals to network and share ideas and resources. The institute is committed to the development of the profession and is able to act as a voice with government and regulators to provide input into legislative and policy changes. Continuing professional development is a focus for the institute and members are able to keep up to date with regulatory changes, and access quality speakers by attending NZCFI events.”

Lynda is looking forward to being involved at Board level.

“We are lucky to have some very dedicated people on our board who bring a broad range of qualifications and experience to the role. I'm looking forward to meeting them all in person at our next meeting later in June and working with them in progressing the institute's goals and priorities. Elected to the board by the southern regional members, it's important to me to be a spokesperson for them at the board level. “

June will be a busy month for Lynda as she is also speaking at a Christchurch function on 13 June. Her topic is something she is well versed in: *Preventing Fraud & Theft in the Workplace*.

## LATEST INSOLVENCY FIGURES



## DIARISE THESE

**13 June Wellington Function:** Proceeds of Crime, Presented by Guy Sayers, Criminal Proceeds Management Unit for the Official Assignee. 12-2pm, PwC Level 16 113-119 The Terrace.

**19 June Auckland Function:** Bribery & Corruption in New Zealand – The investigation & prosecution of Barrie George, Stephen Borlase & Murray Noone, Presented by Margot Gatland, Senior Lawyer and Clive Hudson, a Principal Forensic Accountant / Principal Electronic Forensic Investigator from the SFO . 12-2pm, Alexandra Park Function Centre, Greenlane Road West, Gate B. 10

**21 June Hamilton Function:** Anti-Money Laundering and Countering Financing of Terrorism – AML Update, Presented by Richard Manthel, Certified Anti-Money Laundering Specialist, AML Solutions. 12-2pm PwC boardroom, 4th Floor, 109 Ward St (cnr Anglesea).

**17 July Auckland Function:** IRD - James Atkinson, Principal Advisor with Inland Revenue's Collections team. Specific topic to be confirmed. 12-2pm, Alexandra Park Function Centre, Greenlane Road West, Gate B. 10

**15 August Wellington Function:** Topic and speaker TBC. 12-2pm, PwC Level 16 113-119 The Terrace.

**21 August Auckland Function:** Topic and speaker TBC. 12-2pm, Alexandra Park Function Centre, Greenlane Road West, Gate B. 10

**18 September Auckland Function:** Topic and speaker TBC. 12-2pm, Alexandra Park Function Centre, Greenlane Road West, Gate B. 10

**12-13 OCTOBER NATIONAL CONFERENCE'17:** The Pullman, Auckland